



SOCIAL NARRATIVE: GOING TO LIFELINE THEATRE

Welcome to Lifeline Theatre! We look forward to having you attend *Arnie the Doughnut* on November 5th.



LIFELINE THEATRE

I am going to Lifeline Theatre to see a play.



GOING TO THE THEATRE

My family will drive, take a bus, or take a train to the theatre. If we drive to the theatre, my family might park our car in a parking lot and the Lifeline van will drive us to the theatre.



RAMP

When I arrive at Lifeline Theatre, my family and I will walk up a ramp and enter the building.



LOBBY

When I go into the theatre, I will be in the lobby.



GETTING TICKETS

My family and I will go to the box office to get our tickets to the play.



QUIET AREA

The lobby may be crowded and noisy. If I don't like the crowd, I can go to the quiet area.



BATHROOMS

The bathrooms are in the lobby.
I can use the bathroom at any time.



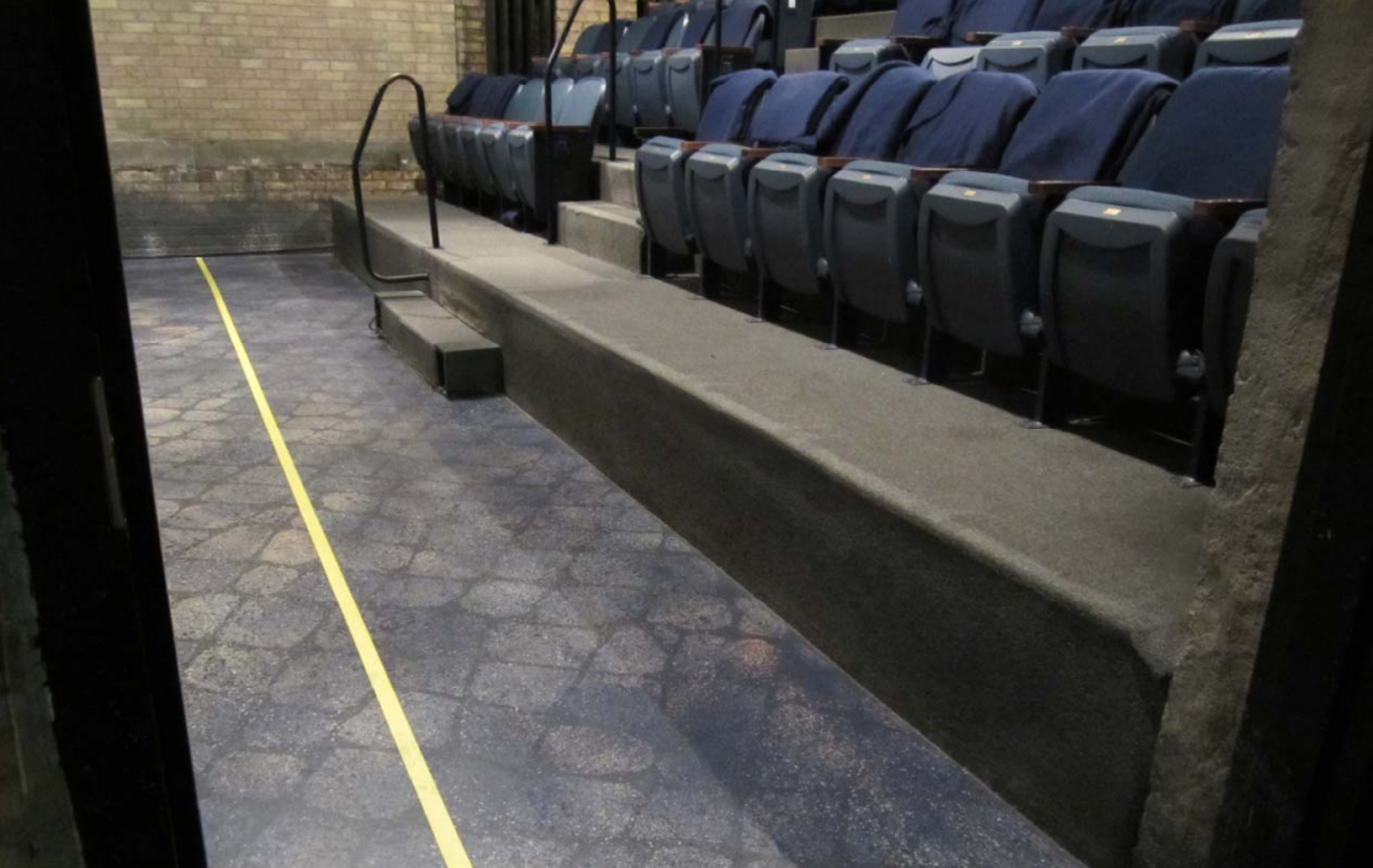
USHERS

When it is time to go into the theatre, I will give my ticket to an usher and they will tell me where my seat is.



SEATS

I will go up steps to my seat. The seats in the theatre have blankets on them that I can use if I get cold.



STAGE

The play will happen on the stage. I will wait with my family in my seat until the show starts. If I need to leave the theatre, I can go out the way I came, but I can't go past the yellow line.



USHER SPEECH

I will know the play is starting when the usher talks onstage.



SCENERY

I will see a bakery, and the outside of a house. The bakery has a table and chairs in it and a display case with donuts. The house has bushes in front of it. During the play the scenery will move and I will see the inside of Mr. Bing's house and his front door.



PROPS

I will see the actors pretend to drive down a road in a small car. I will see signs and a book of rules that Mrs. Plute uses.



MR. BING & ARNIE

Mr. Bing is a person who likes to follow the rules.

Arnie the Doughnut is a chocolate-frosted, rainbow-sprinkled doughnut. The actor wears a large doughnut costume that isn't real.



OTHER DOUGHNUTS

There are three other donuts at the bakery: Powdered, French Cruller, and Jelly.

These actors wear large costumes to make them look like different types of doughnuts.



DONUT HOLES & BAKER

There are Doughnut Holes in the play that are puppets the actors will use. The puppets are not real and the actors will put their hands in the backs of them to make the mouths move when the sing.

The Baker runs the bakery where Arnie and the other doughnuts are made.



SHEILA, RONNIE & MRS. PLUTE

Sheila and Ronnie live in the same community as Mr. Bing. Sheila likes to garden and Ronnie likes to exercise. Mrs. Plute is in charge of the community and makes a lot of rules. She does not like it when people break the rules.



ACTORS ON THE STAIRS

During the play the actors might enter and exit through the audience. The actors might talk directly to me, but they won't hurt me.



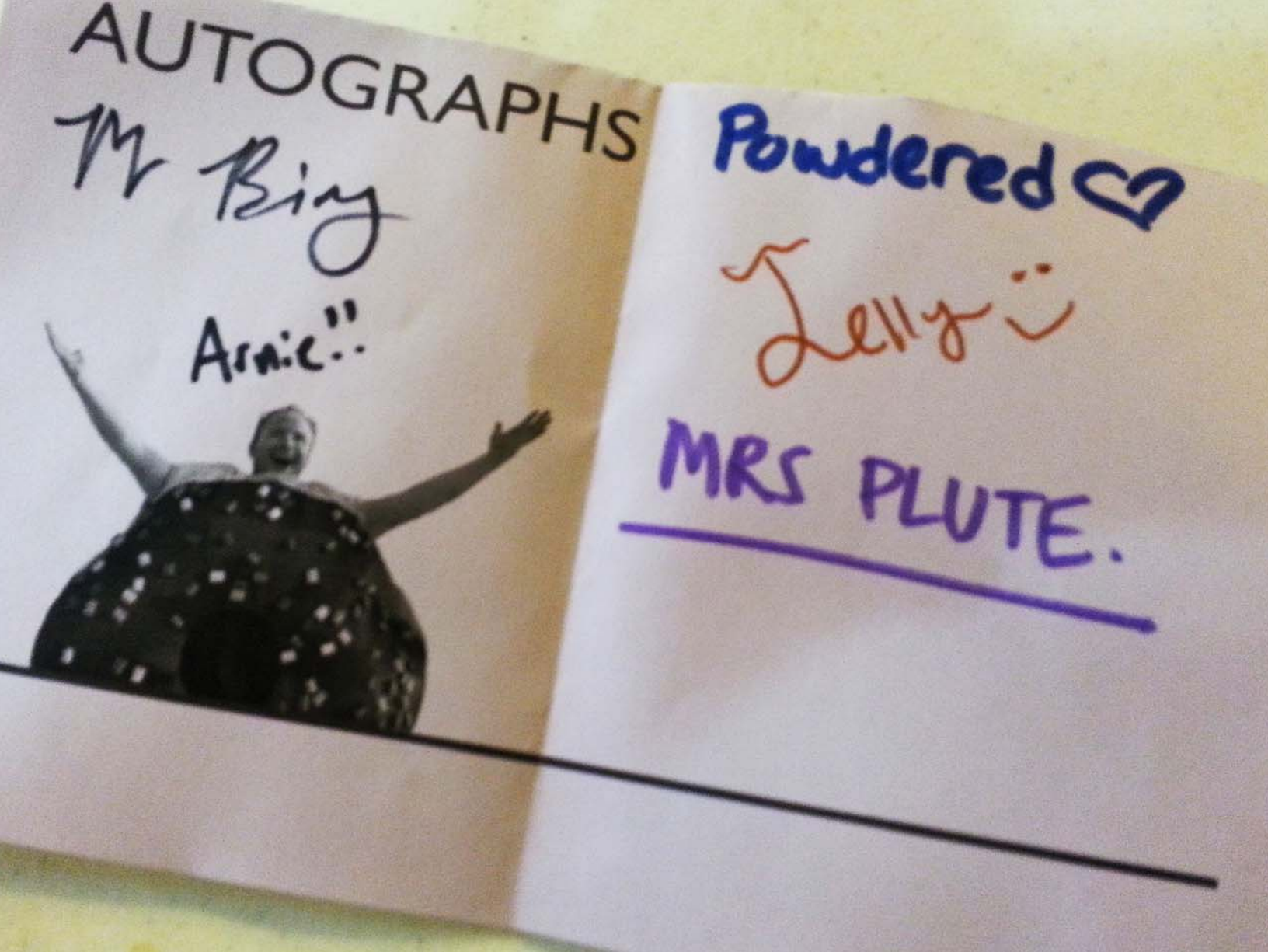
LIGHTS & SOUNDS

The lights will sometimes change colors during the play. The music and singing may sometimes be loud. If it is too loud I can ask for headphones to make it quieter. Sometimes people will clap after a song.



BOWING

After the play is over, the actors will bow and I can clap my hands.



AUTOGRAPHS

I will leave the theatre and go into the lobby. The actors will be in the lobby and I can meet them if I want and have them autograph my program.



THANK YOU FOR COMING
TO LIFELINE THEATRE

We hope to see you again!